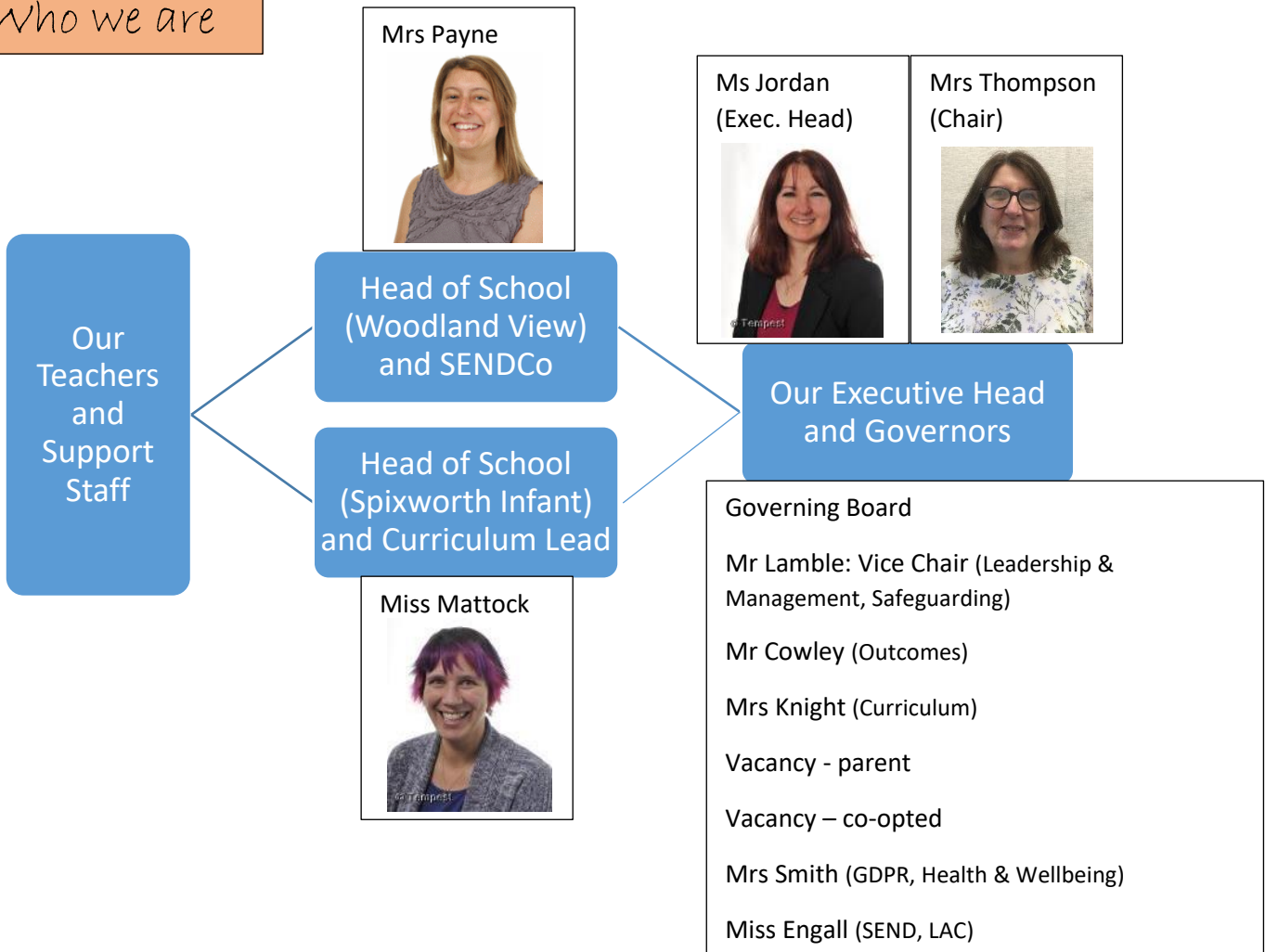
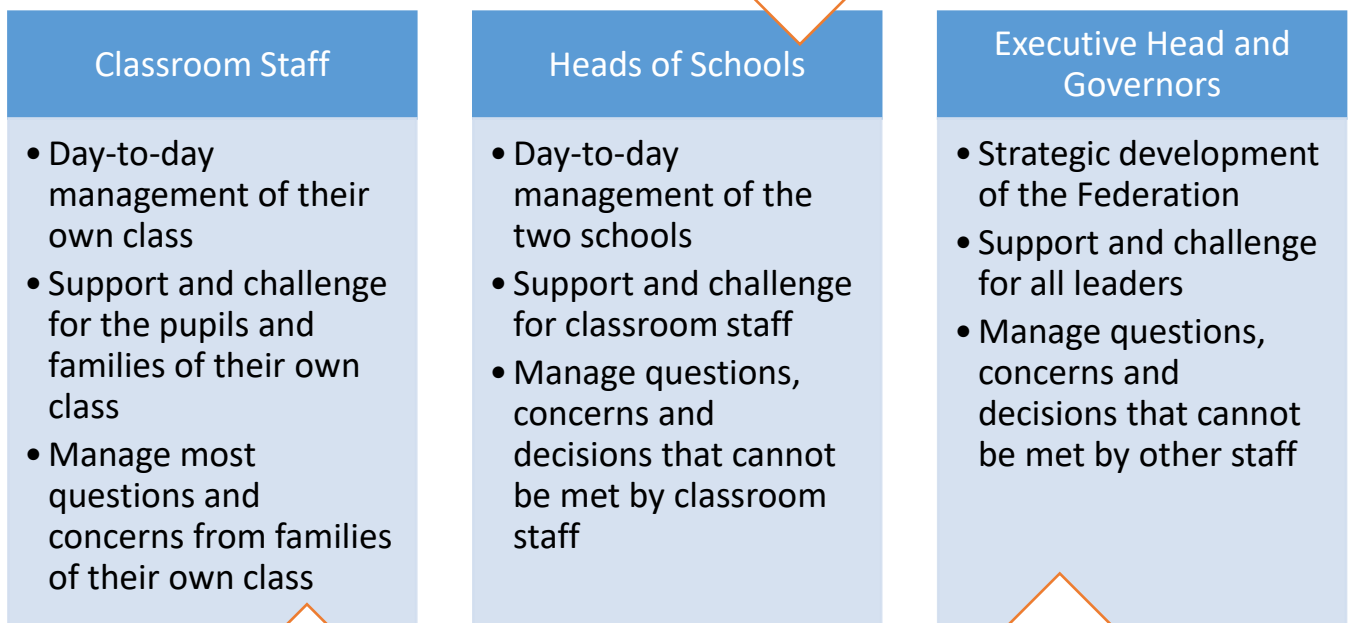


Who we are



What we do

'It is a challenging yet rewarding position to work with our whole community to bring about the best outcomes for every child in our care'



'Working directly with families is so important in the work I do to support the children'

'The best possible partnerships, curriculum, challenge and consistency direct all we do for excellence for our schools'

Contact us

Teachers or Support Staff

- Available before or after school
- Direct contact via Tapestry (SIS) or Google Classroom (WV)
- Email or phone the office to request a call back

Heads of School

- Mrs Payne and Miss Mattock are on the gate when possible in the mornings for brief contact
- For private or more detailed conversations please email or phone to request this

Executive Head

- Contact the Executive Head via email or phone. Simply ask for your message to be passed to Ms Jordan or ask for her to contact you
- **Governors**
- Governors are sometimes on the playgrounds, attend school events (when possible) or an email contact can be requested

Most questions or concerns can be dealt with by the Class Teacher.

If you cannot speak to your child's teacher face-to-face or you need to speak to somebody else, please call or email the school office and we will get back to you.

Infant School: 01603 898483 office@spixworth.norfolk.sch.uk

Junior School: 01603 898292 office@woodlandview.norfolk.sch.uk

Please note: our offices operate across both sites.

